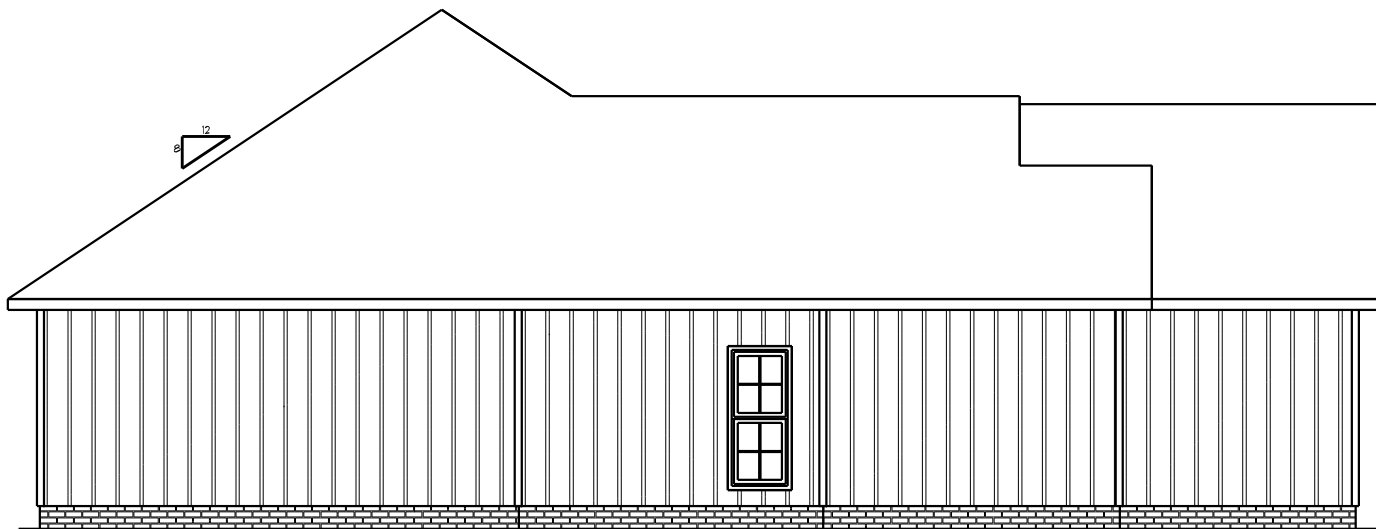
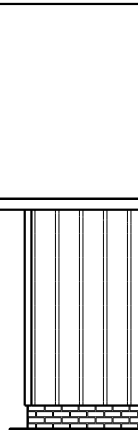




FRONT ELEVATION SC: 1/4" = 1'0"



LEFT ELEVATION SC: 1/4" = 1'0"



RIGHT

- ASPHALT SHINGLES
- CONTINUOUS AIR VENT BARS
- ENDS AT RIDGE - TO BE IN
- AIR FLOW IS NOT RESTRICT
- PRE-ENGINEERED ROOF TR
- CONTINUOUS EAVES PROTE
- (2 COURSES)
- 1/2" OSB CAU
- H CLIPS
- PRE-FINISHED
- ALUMINUM GUTTER
- EAVE FLASHING
- 2x6 FASCIA
- PRE-FINISHED VINYL SOFFIT
- VENTS

SIDING 1/4" STU

